

**AREAS**

FIRST FLOOR HEAVY	140 M
SOFT AREA	420 M
GARAGE	80 M
FRONT PORCH	80 M
LAW	80 M
<b>TOTAL COVERED AREA</b>	<b>260 M</b>
LAB	20 M

**WALL TYPES**

1/4" W/CC	1/4" W/CC
1/4" W/CC V	1/4" W/CC V
1/4" W/CC V	1/4" W/CC V
1/4" W/CC V	1/4" W/CC V
1/4" W/CC V	1/4" W/CC V
1/4" W/CC V	1/4" W/CC V
1/4" W/CC V	1/4" W/CC V

**FIRST FLOOR PLAN**  
SCALE 1/4" = 1'-0"

COPYRIGHT 2010 - DAVID E. WIGGINS ARCHITECT, PLLC - DO NOT REPRODUCE



**ARCHITECT**  
2010 Registered Trademark - Licensee Number - 10001  
01/10/2010/2010



PLAN 2/6/2

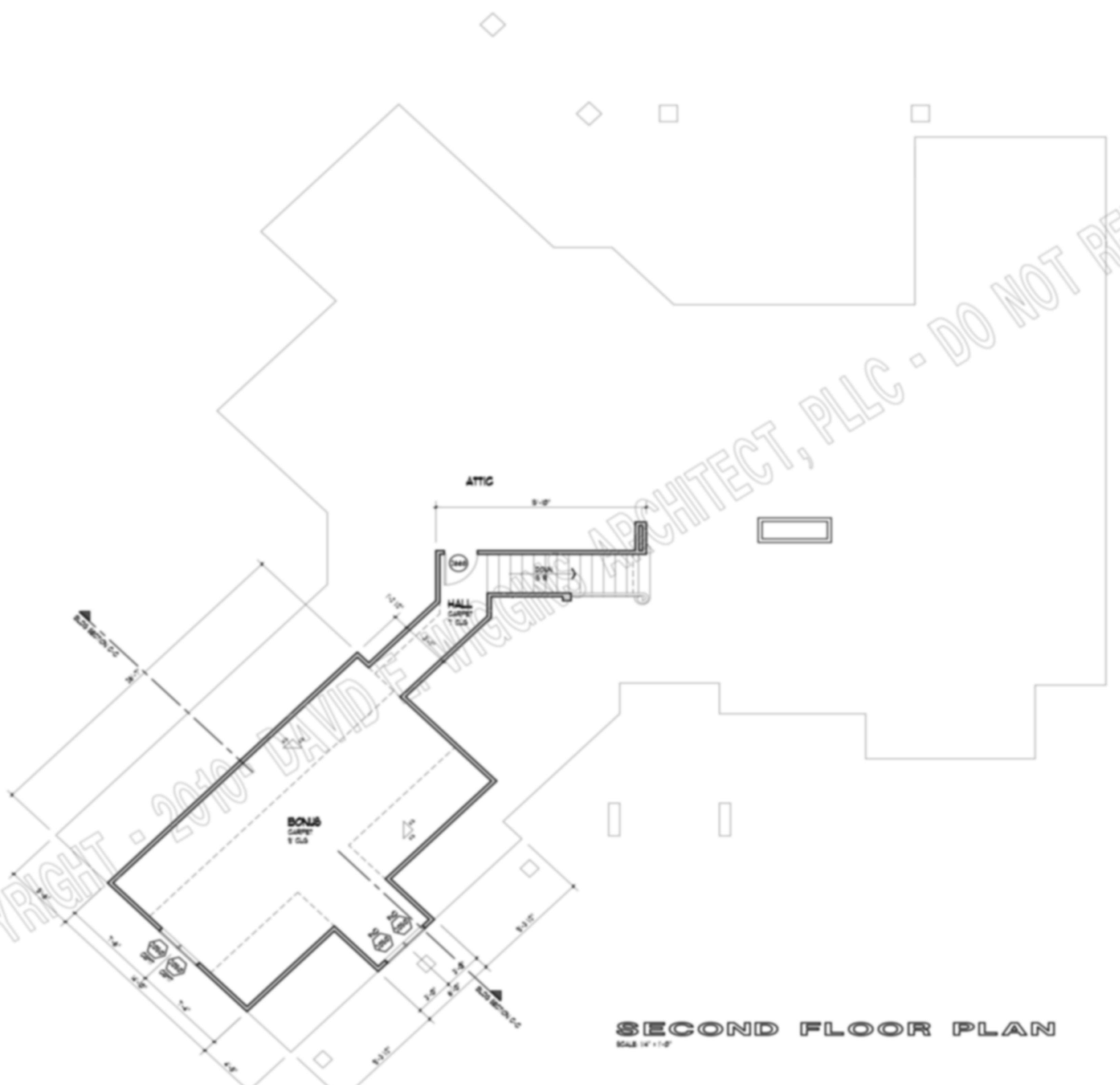
PROJECT

REVISION

DATE

DECEMBER 1, 2010

COPYRIGHT © 2010 DAVID F. WIGGINS ARCHITECT, PLLC - DO NOT REPRODUCE



**SECOND FLOOR PLAN**  
SCALE 1/4" = 1'-0"

COPYRIGHT 2010 - DAVID F. WIGGINS ARCHITECT, PLLC - DO NOT REPRODUCE

PROJECT:  
REVISION:

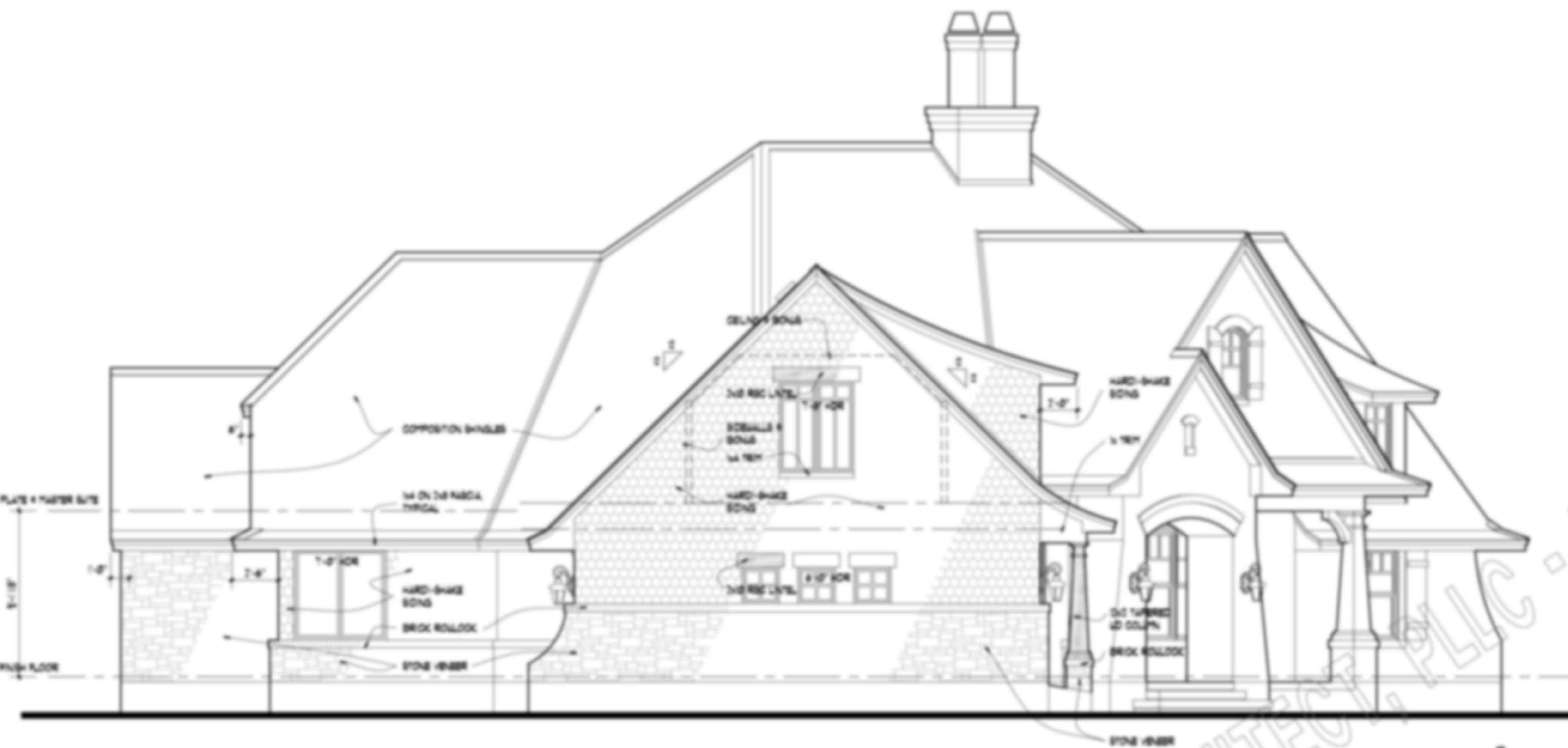
DATE:  
DECEMBER 1, 2010

**A2**  
OF 10



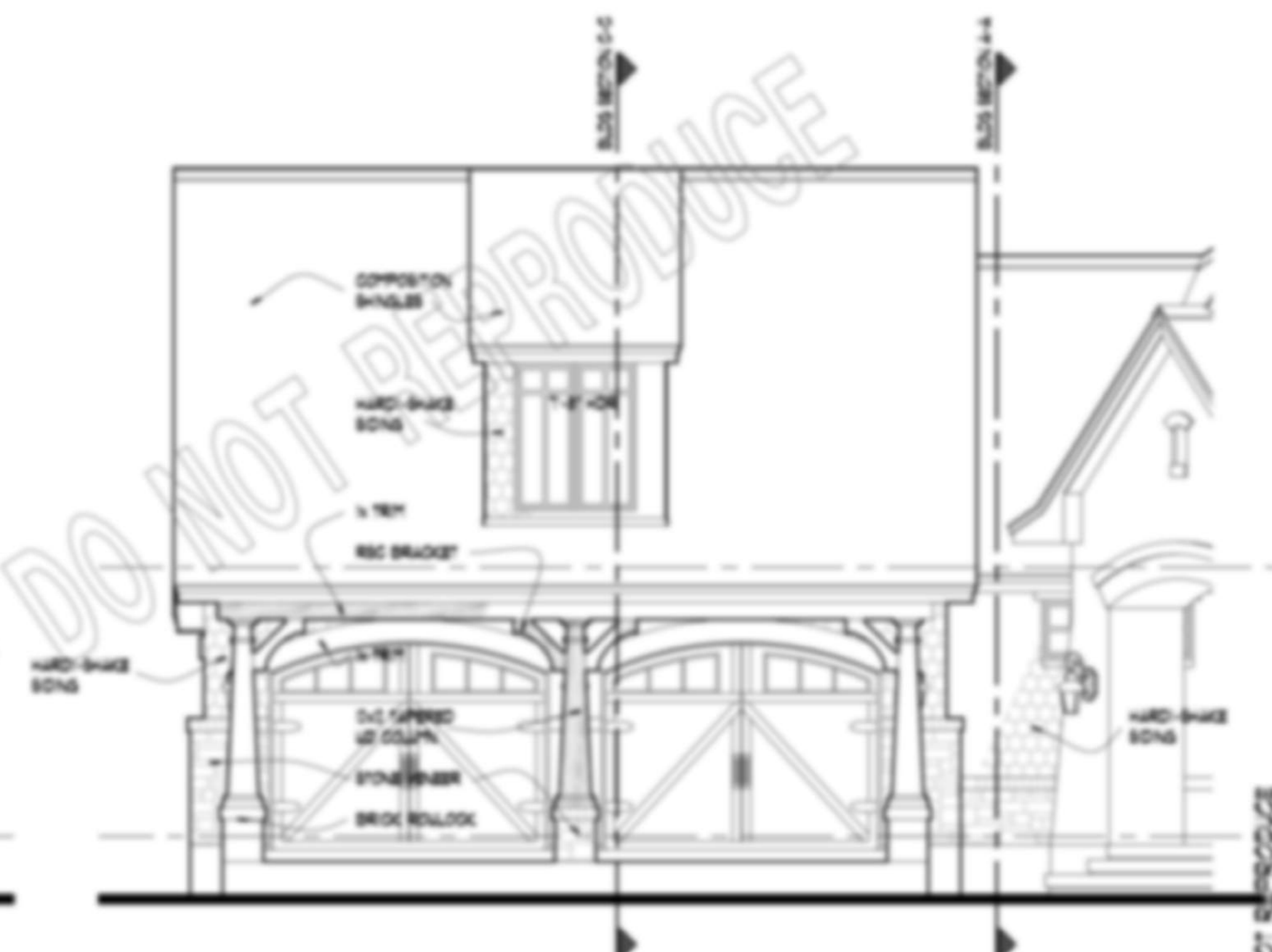
PLAN 2482





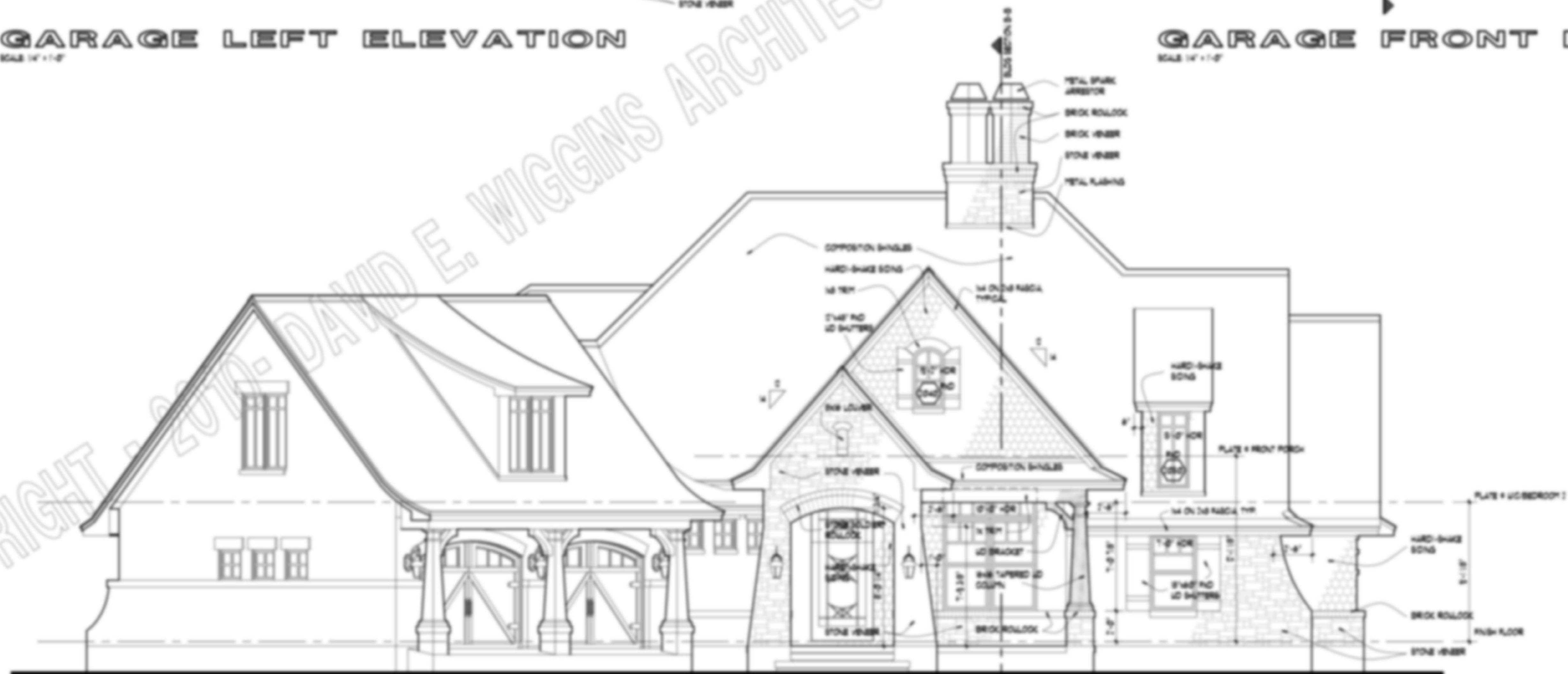
**GARAGE LEFT ELEVATION**

SCALE 1/4" = 1'-0"



**GARAGE FRONT ELEV**

SCALE 1/4" = 1'-0"



**FRONT ELEVATION**

SCALE 1/4" = 1'-0"

COPYRIGHT 2011 - DAVID E. WIGGINS ARCHITECT, PLLC - DO NOT REPRODUCE



ARCHITECT

2770 Highland Trail - Louisville, Tennessee - 40205  
615.262.2700



PLAN 2482

FILED:

REVISION

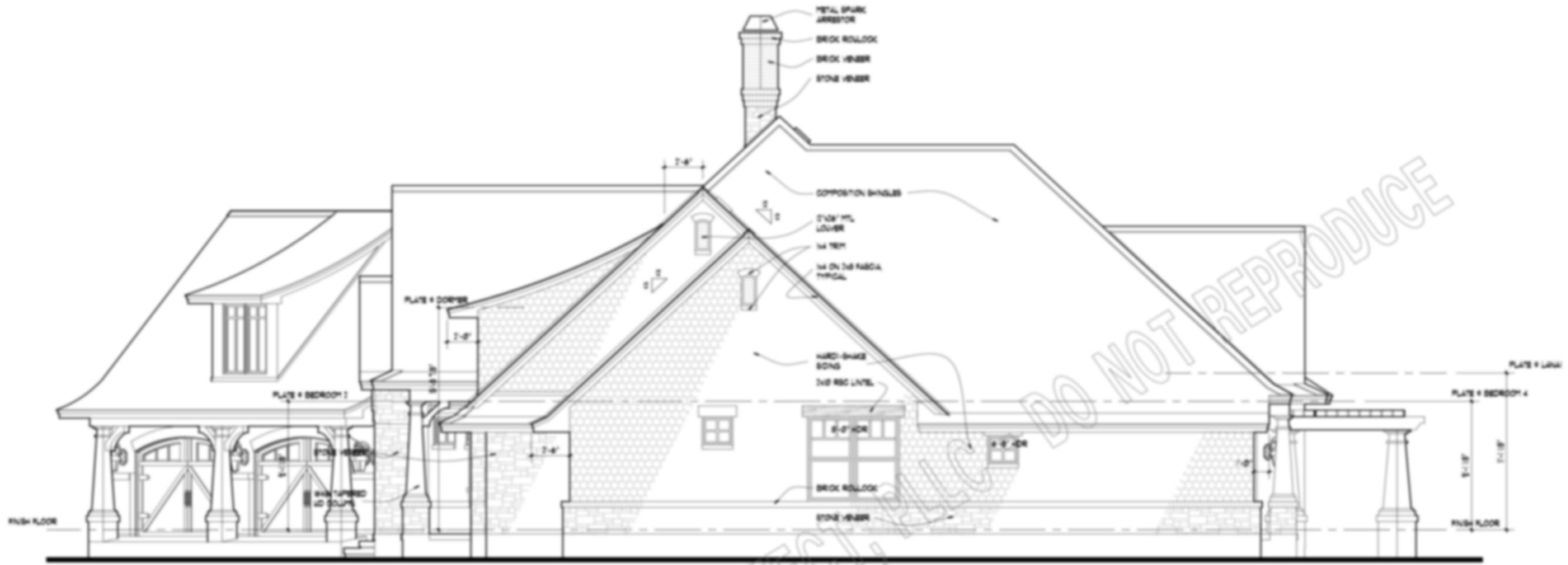


DATE

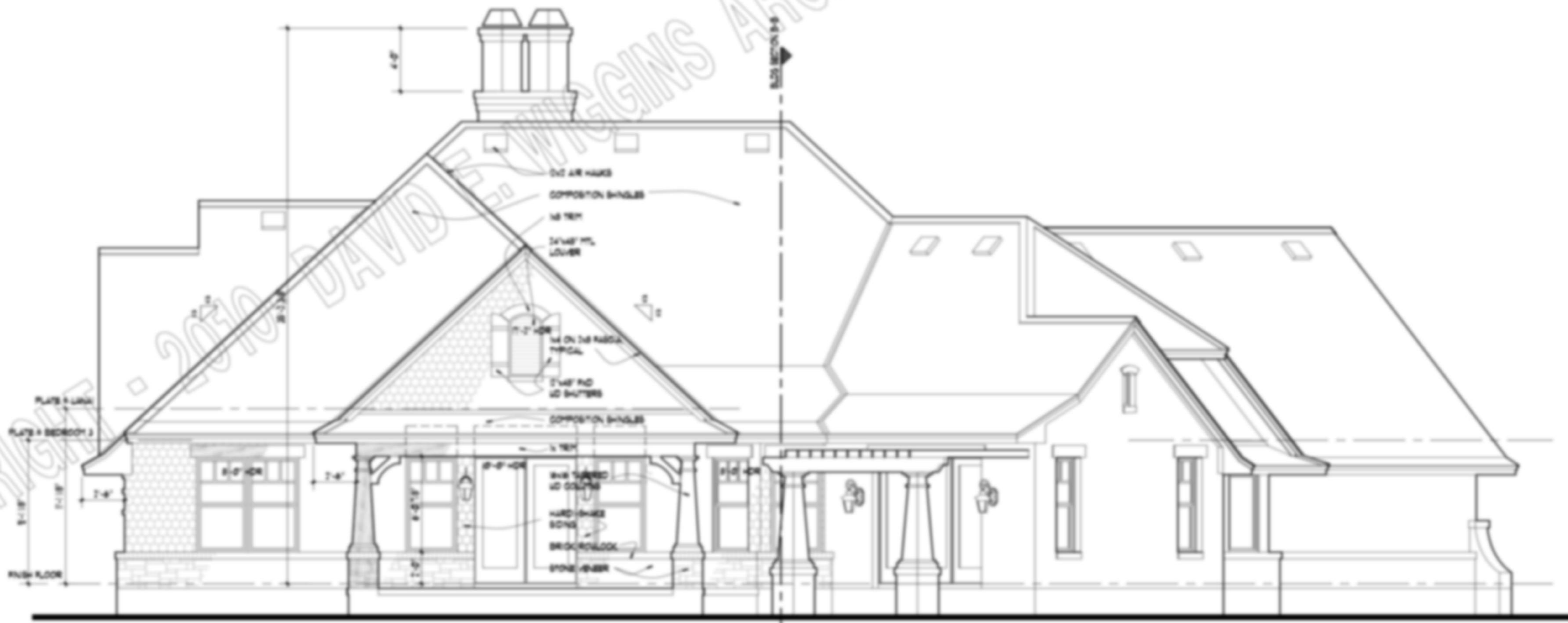
DECEMBER 1, 2011







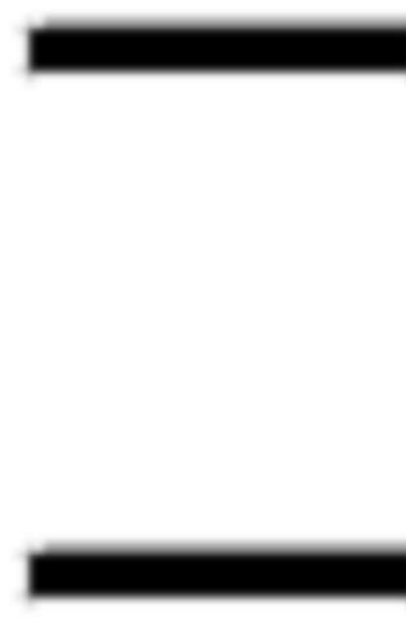
**RIGHT ELEVATION**  
SCALE 1/4" = 1'-0"



**REAR ELEVATION**  
SCALE 1/4" = 1'-0"



**ARCHITECT**  
DAVID E. HIGGINS ARCHITECT, PLLC  
2720 Highland Trail • Leesville, Texas • 75841  
(936) 262-2720



COPYRIGHT 2012 • DAVID E. HIGGINS ARCHITECT, PLLC • DO NOT REPRODUCE

PLAN 2482

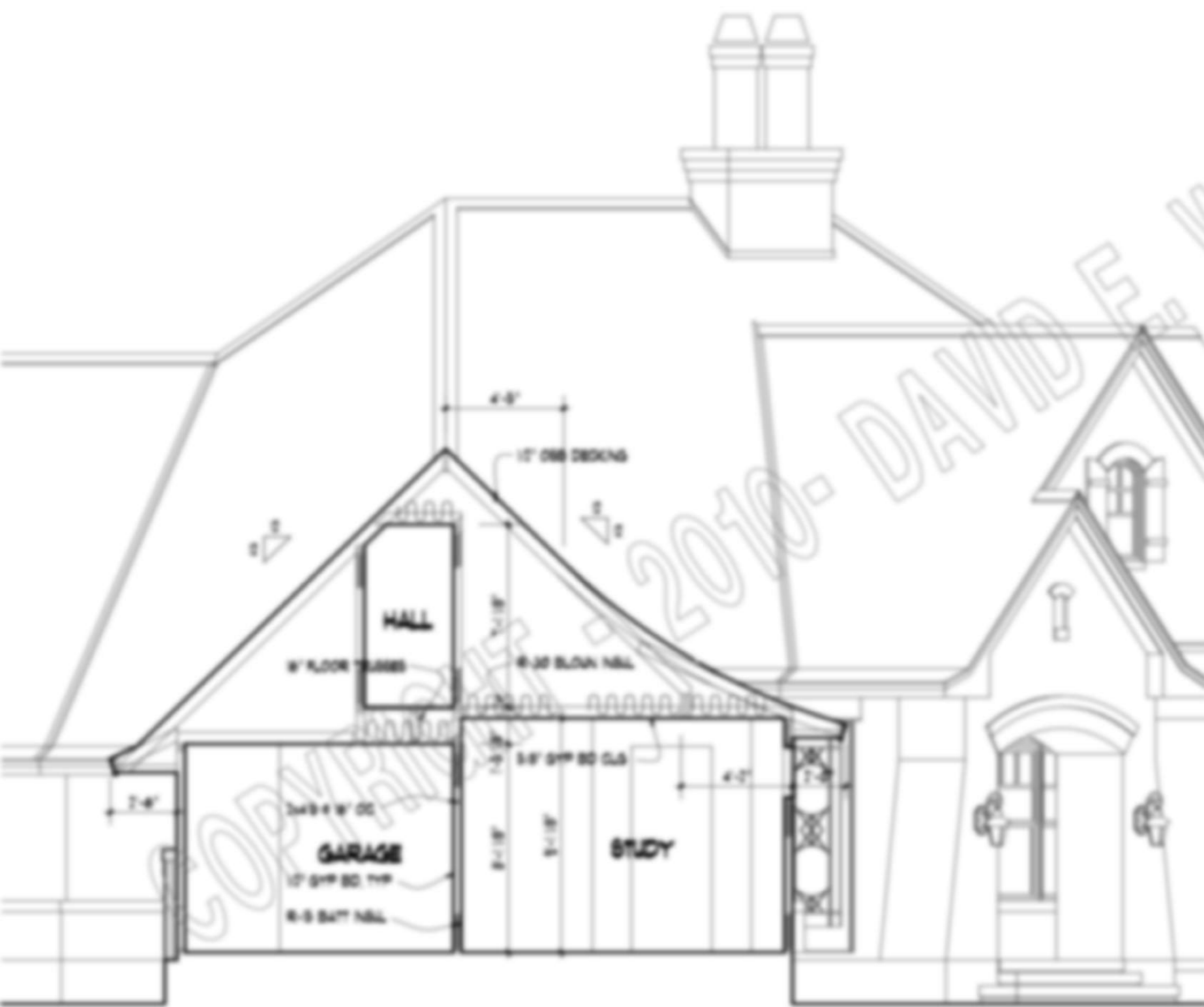


DATE  
DECEMBER 1, 2012

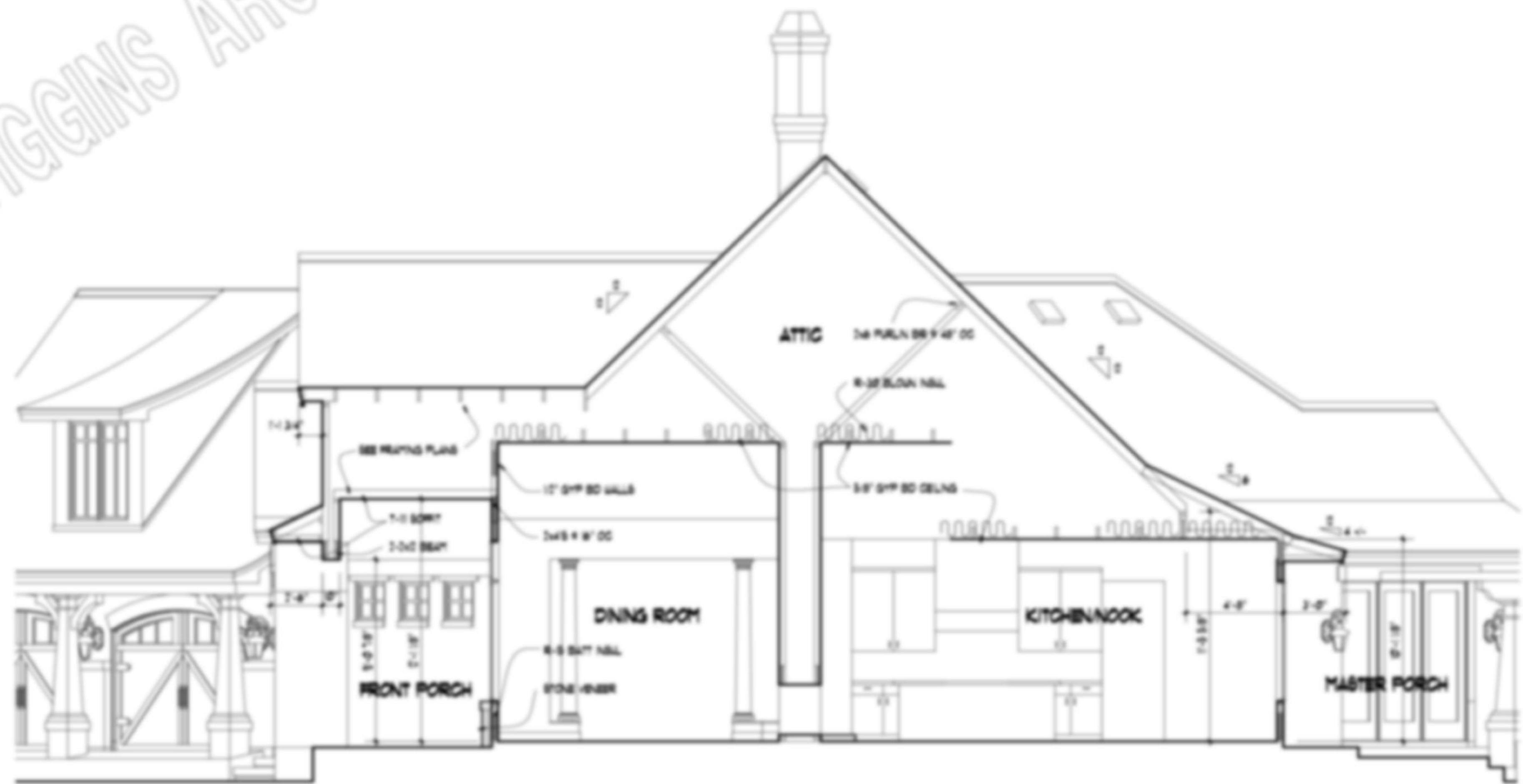




**GARAGE REAR ELEVATION**  
SCALE 1/4" = 1'-0"



**BLDG SECTION A-A**  
SCALE 1/4" = 1'-0"



**BLDG SECTION B-B**  
SCALE 1/4" = 1'-0"



DAVID E. WIGGINS  
**ARCHITECT**  
2770 Highland Trail - Lakeland, Texas - 76044  
(817) 262-2700

COPYRIGHT 2010 - DAVID E. WIGGINS ARCHITECT, PLLC - DO NOT REPRODUCE

PLAN 2482

PROJECT

REVISIONS

DATE

DECEMBER 3, 2010

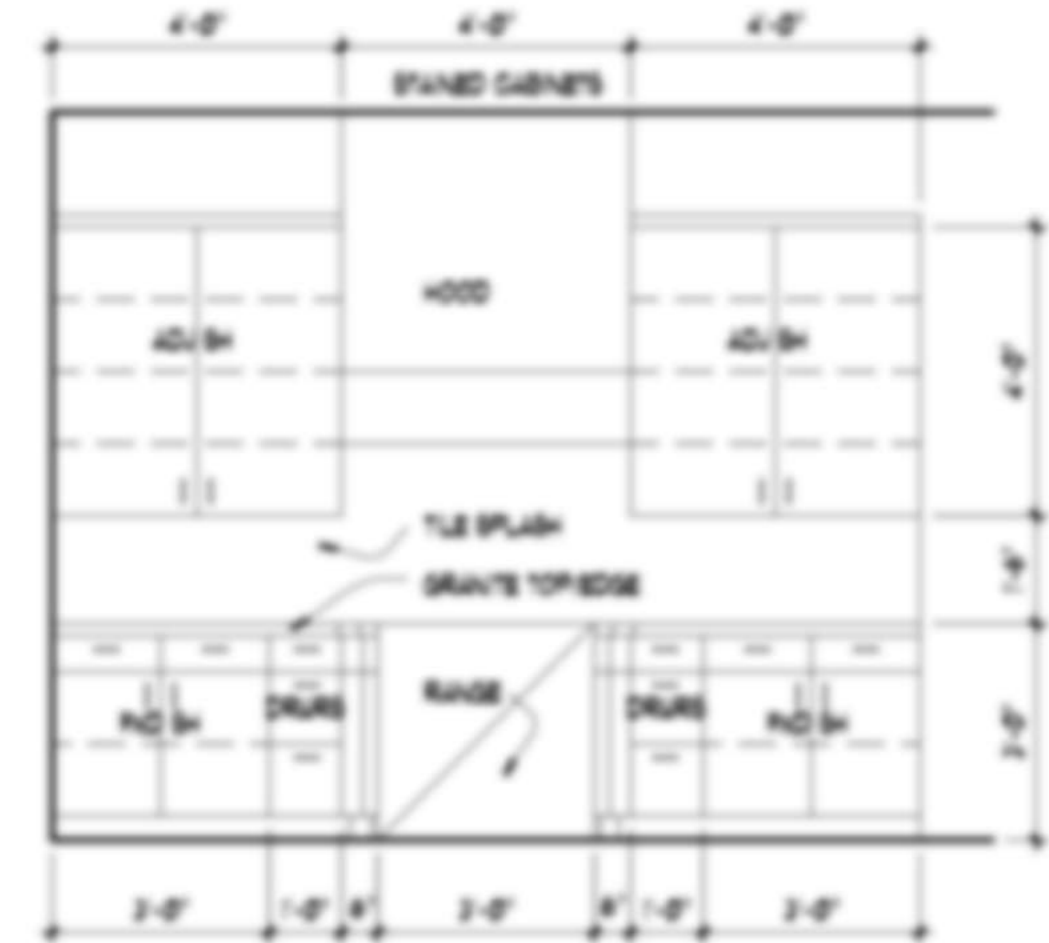
**A5**

OF 10





1/4" KITCHEN 38' x 11'-0"



2/4" KITCHEN 38' x 11'-0"



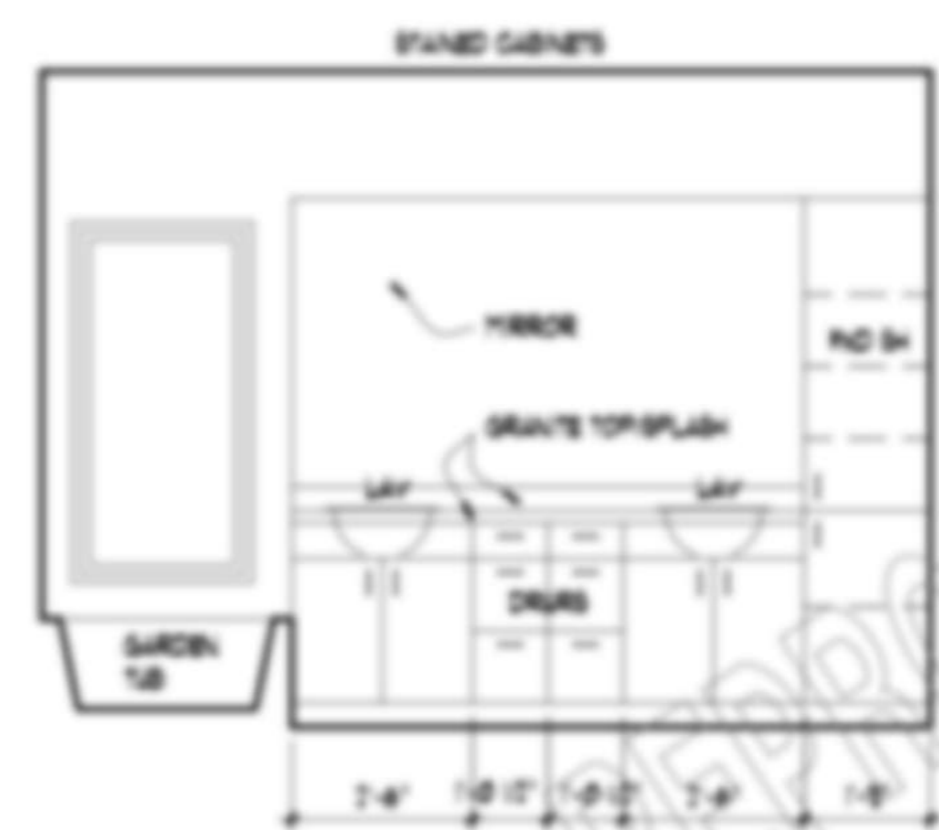
3/4" KITCHEN 38' x 11'-0"



4/4" UTILITY 38' x 11'-0"



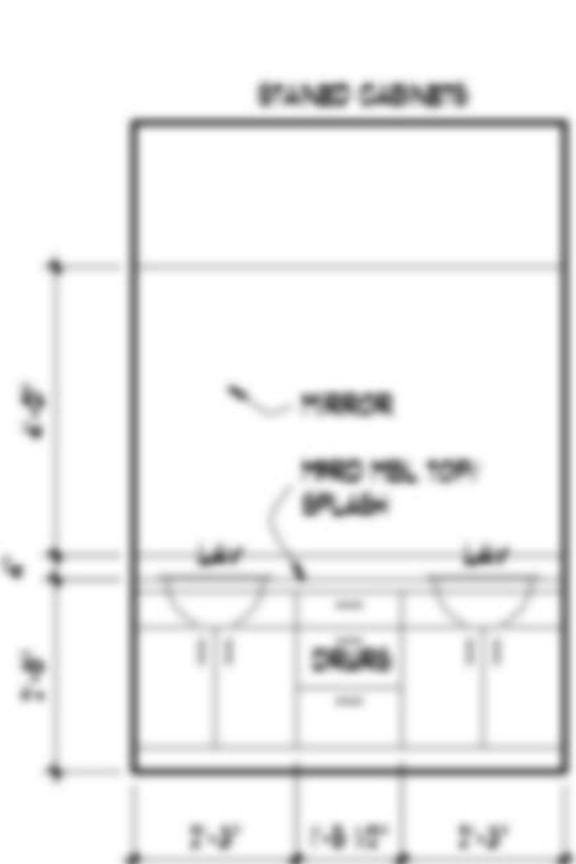
5/4" UTILITY 38' x 11'-0"



6/4" MASTER BATH 38' x 11'-0"



7/4" MSTR BATH 38' x 11'-0"



8/4" DRESS 38' x 11'-0"



9/4" BATH 2 38' x 11'-0"



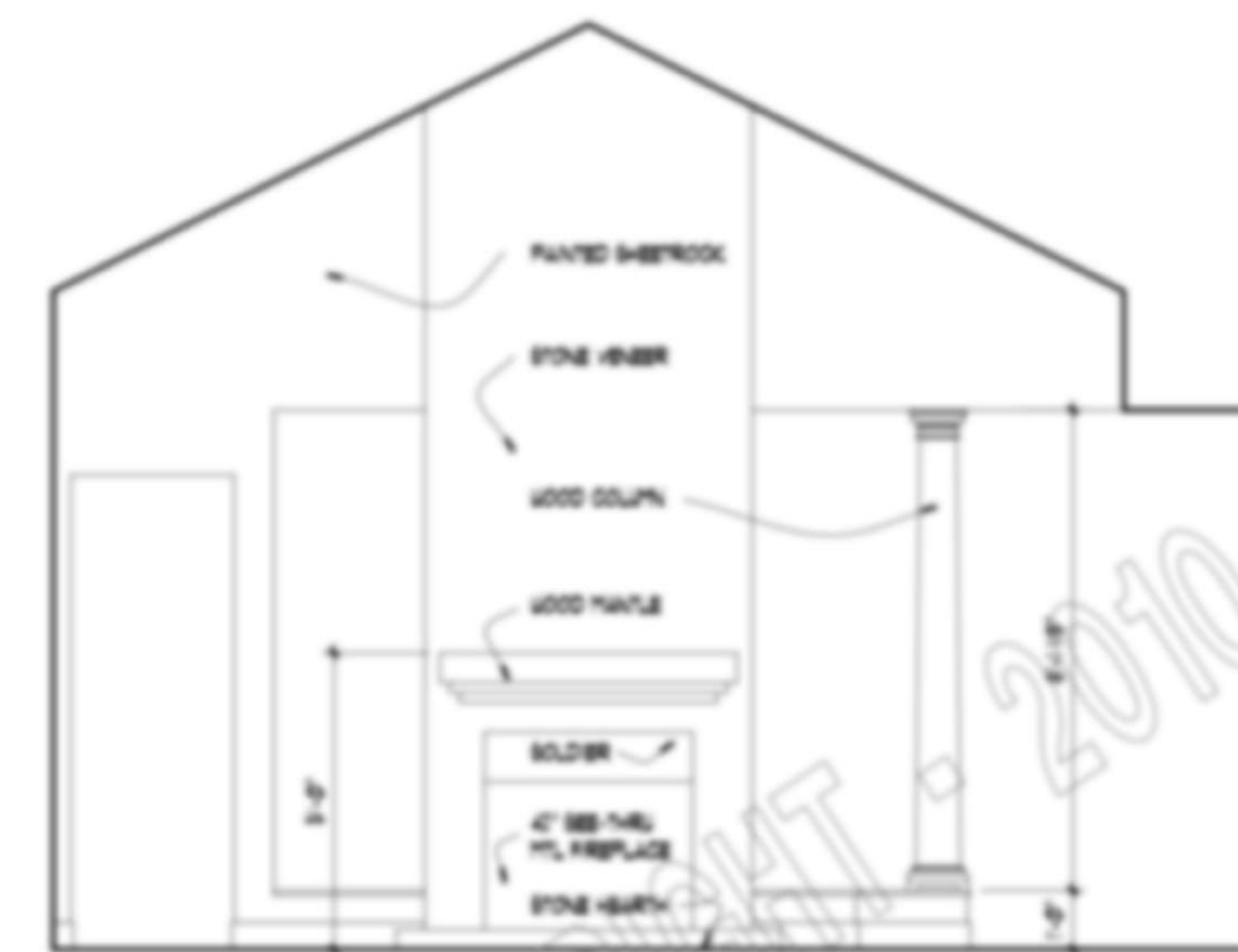
10/4" BATH 3 38' x 11'-0"



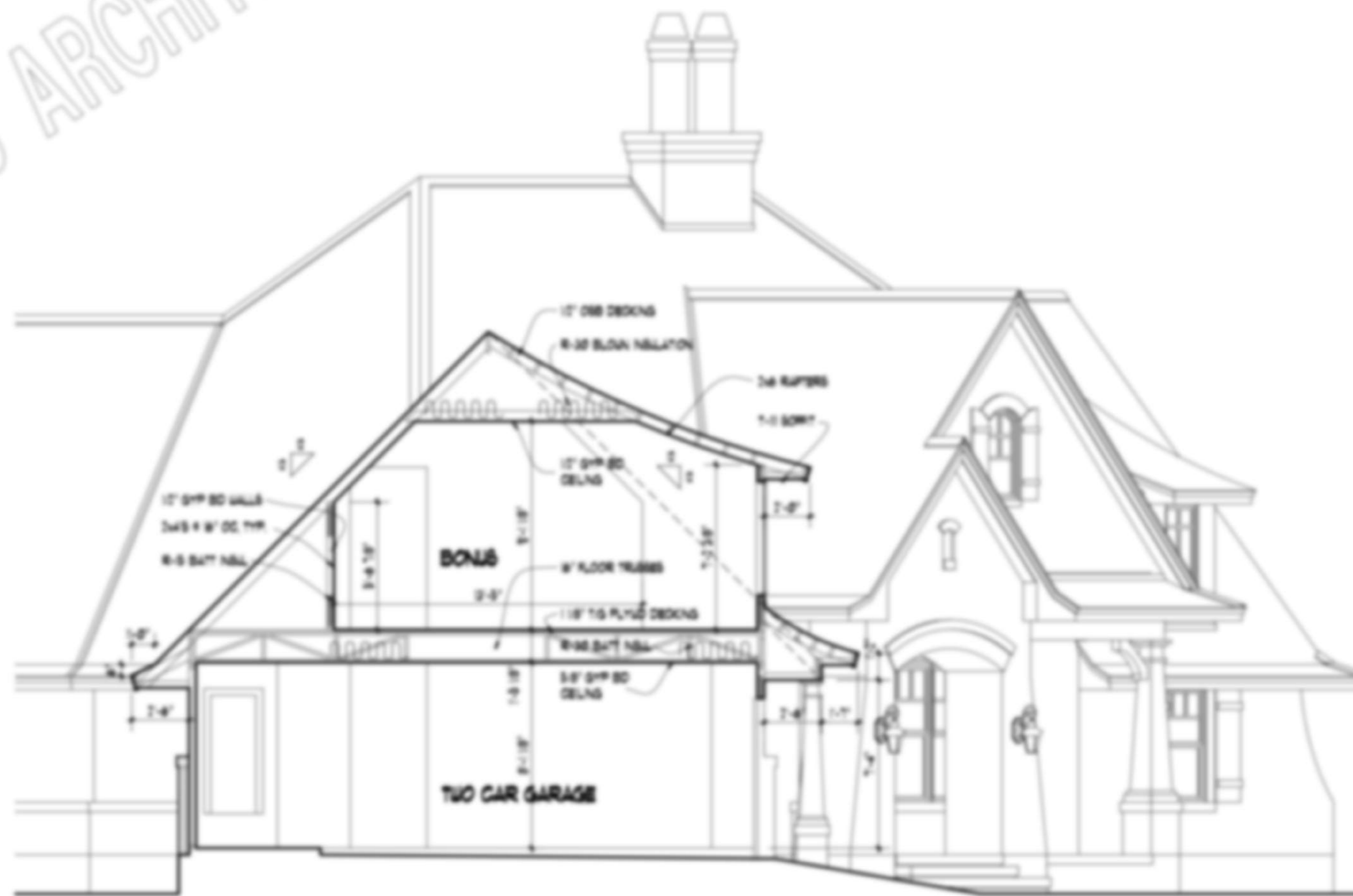
11/4" POWDER 38' x 11'-0"

### CABINET ELEVATIONS

SCALE 3/8" = 1'-0"



12/4" FAMILY 38' x 11'-0"



### BLDG SECTION C-C

SCALE 1/4" = 1'-0"

COPYRIGHT 2010 - DAVID E. WIGGINS ARCHITECT, PLLC - DO NOT REPRODUCE

PROJECT

REVISION

DATE

DECEMBER 1, 2010

PLAN 2482

A6

OF 10



HEADER SCHEDULE	
FIRST FLOOR	
OPNS SIZE	2-DAYS
7-2	2-DAYS
4-UP	2-DAYS
SECOND FLOOR	
OPNS SIZE	2-DAYS
7-2	2-DAYS
4	2-DAYS
8-UP	2-DAYS
ALL UPPER NOTATED SHALL BE 1/2" BRIDG 8"X 18" OR 2" SPACE	

**FIRST FLOOR CEILING FRAMING PLAN**  
SCALE 1/4" = 1'-0"

COPYRIGHT 2011 - DAVID E. WIGGINS ARCHITECT, PLLC - DO NOT REPRODUCE

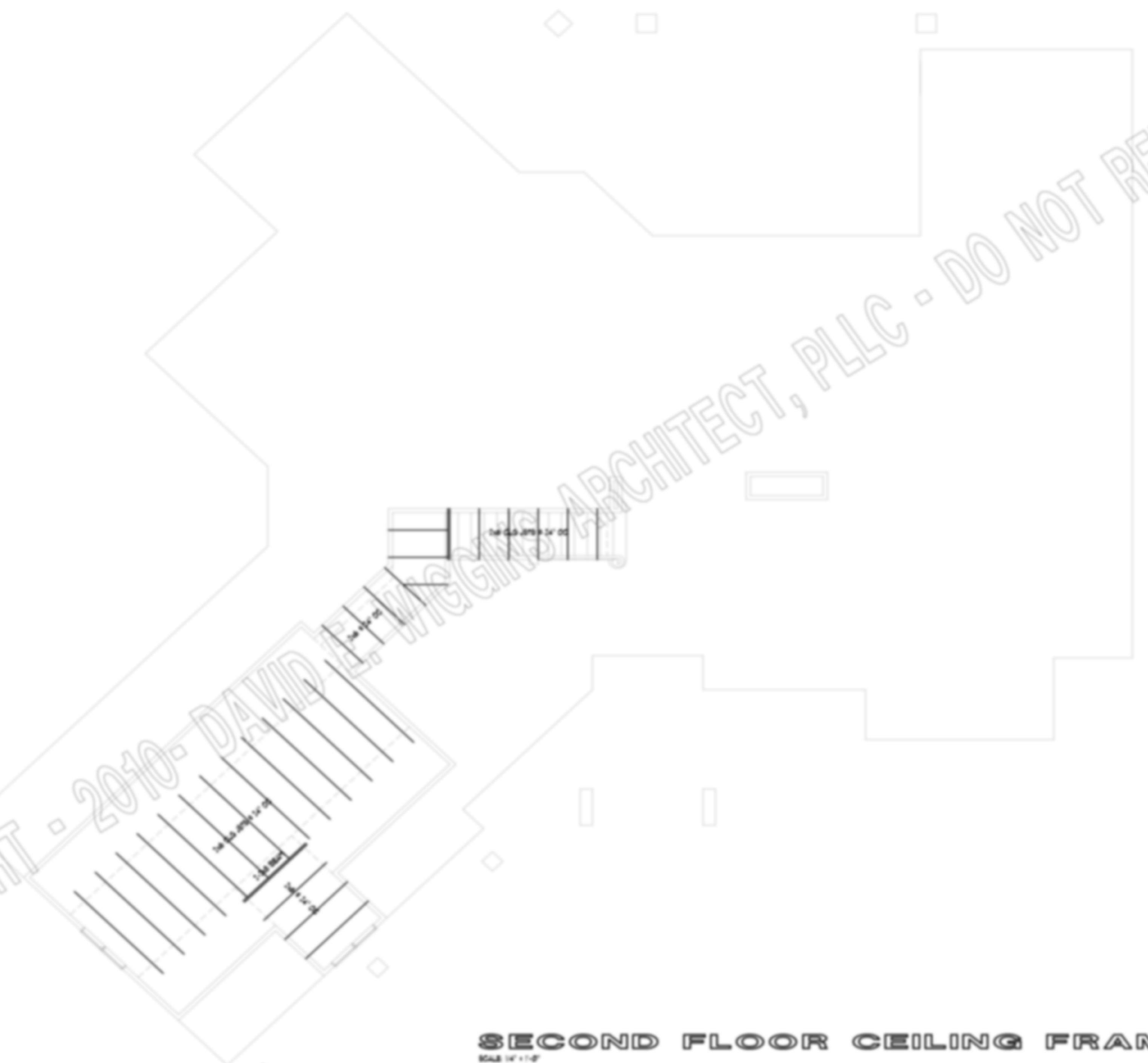
PROJECT: \_\_\_\_\_  
 REVISION: \_\_\_\_\_  
 DATE: \_\_\_\_\_  
 DECEMBER 1, 2011



PLAN 2482



COPYRIGHT - 2010 - DAVID LEWIS WIGGINS ARCHITECT, PLLC - DO NOT REPRODUCE



**SECOND FLOOR CEILING FRAMING PLAN**

SCALE 1/4" = 1'-0"

COPYRIGHT 2010 - DAVID LEWIS WIGGINS ARCHITECT, PLLC - DO NOT REPRODUCE

REVISION

DATE

DECEMBER 1, 2010



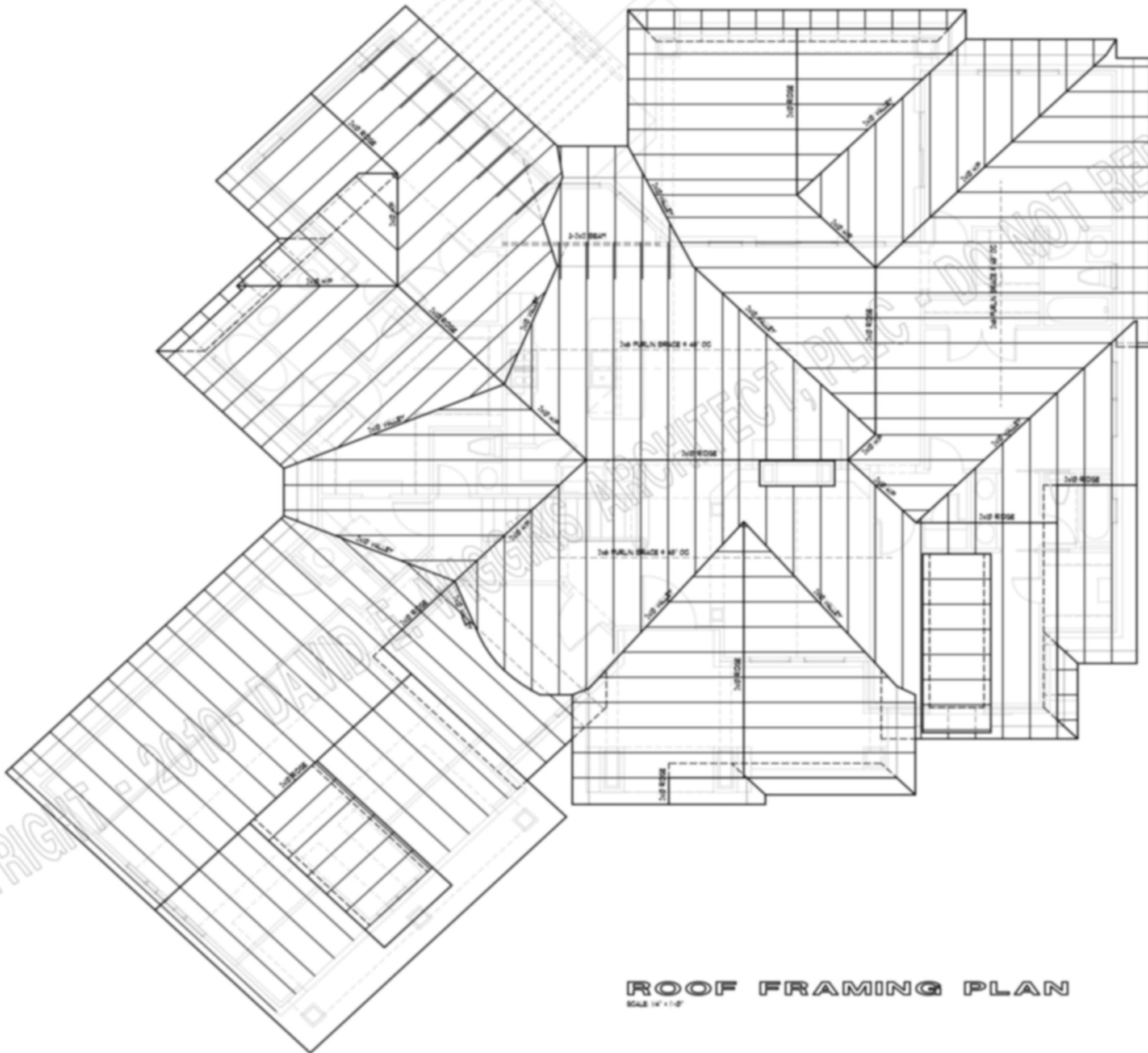
**ARCHITECT**

2770 Highland Trail - Lubbock, Texas - 79401  
979.283.2700



PLAN 2482





- NOTING NOTES:
1. ALL MEMBERS SHALL BE NO. 1 GRADE SPF OR SP LUMBER.
  2. ALL RAFTERS ARE TO BE GROOVED SP OR BETTER.
  3. ALL TRUSSES ARE 12" x 12" CC.
  4. BRACE ALL INTERSECTIONS OF ROOF UP OR VALLEY DOWN TO JOINT BEARING WALLS.
  5. ALL TRUSSES SHALL BE DESIGNED BY A LOCAL ENGINEER, PREFERABLY A TRUSS MANUFACTURER.

**ROOF FRAMING PLAN**  
SCALE 1/4" = 1'-0"

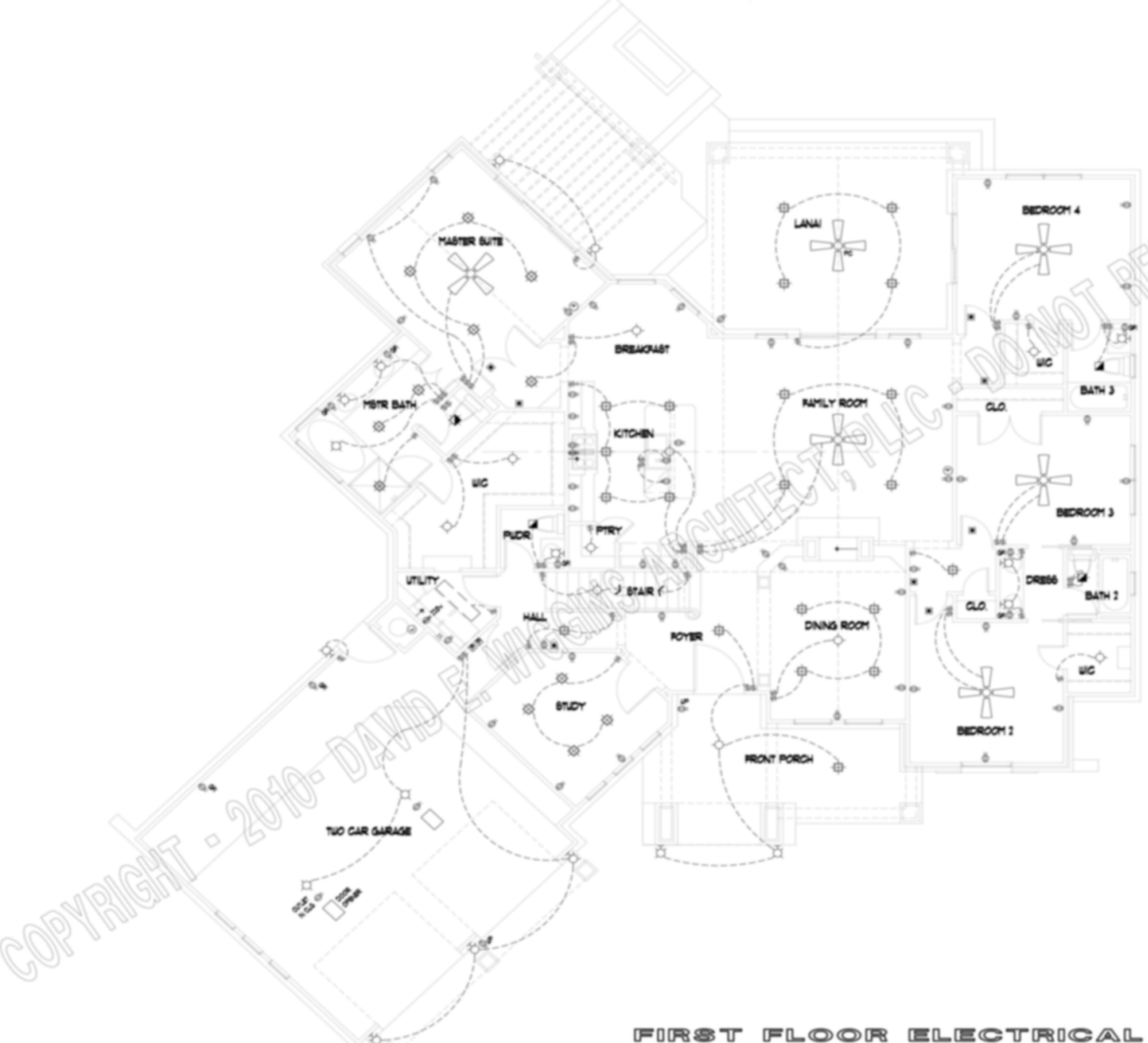
COPYRIGHT 2010 - DAVID E. USSING ARCHITECT, PLLC - DO NOT REPRODUCE

REVISED

DATE  
DECEMBER 1, 2010

**A9**  
OF 10





**LEGEND**

⊕	15A FLOOR OUTLET
⊕	15A DUPLEX OUTLET
⊕	WATERPROOF OUTLET
⊕	BROAD HALL NALLATED
⊕	20A OUTLET
⊕	1 WAY SWITCH
⊕	2 WAY SWITCH
⊕	4 WAY SWITCH
⊕	DIMMER SWITCH
⊕	GENERAL PURPOSE L/S
⊕	WALL BRACKET L/S
⊕	RECESSED CAN L/S
⊕	RECESSED R/BALL L/S
⊕	FLUORESCENT L/S
⊕	DOUBLE FLUORESCENT L/S
⊕	FLUORESCENT TRIM
⊕	SMOKE DETECTOR
⊕	SAS CONNECTION
⊕	HOME BBS
⊕	CEILING FAN
⊕	EXHAUST FAN
⊕	EXHAUST FAN/LIGHT
⊕	CHIMNEY
⊕	JUNCTION BOX
⊕	PHONE JACK
⊕	HEATER
⊕	A/C DISCONNECT
⊕	ICE MAKER CONNECTION
⊕	WATER CONNECTION
⊕	CABLE TV
⊕	TELEPHONE
⊕	R/W SWITCH
⊕	TRN RECESSED CAN L/S

**FIRST FLOOR ELECTRICAL PLAN**  
SCALE 1/4" = 1'-0"

COPYRIGHT 2010 - DAVID E. WIGGINS ARCHITECT, PLLC - DO NOT REPRODUCE

PROJECT: \_\_\_\_\_  
 REVISION: \_\_\_\_\_  
 DATE: \_\_\_\_\_  
 DECEMBER 1, 2010

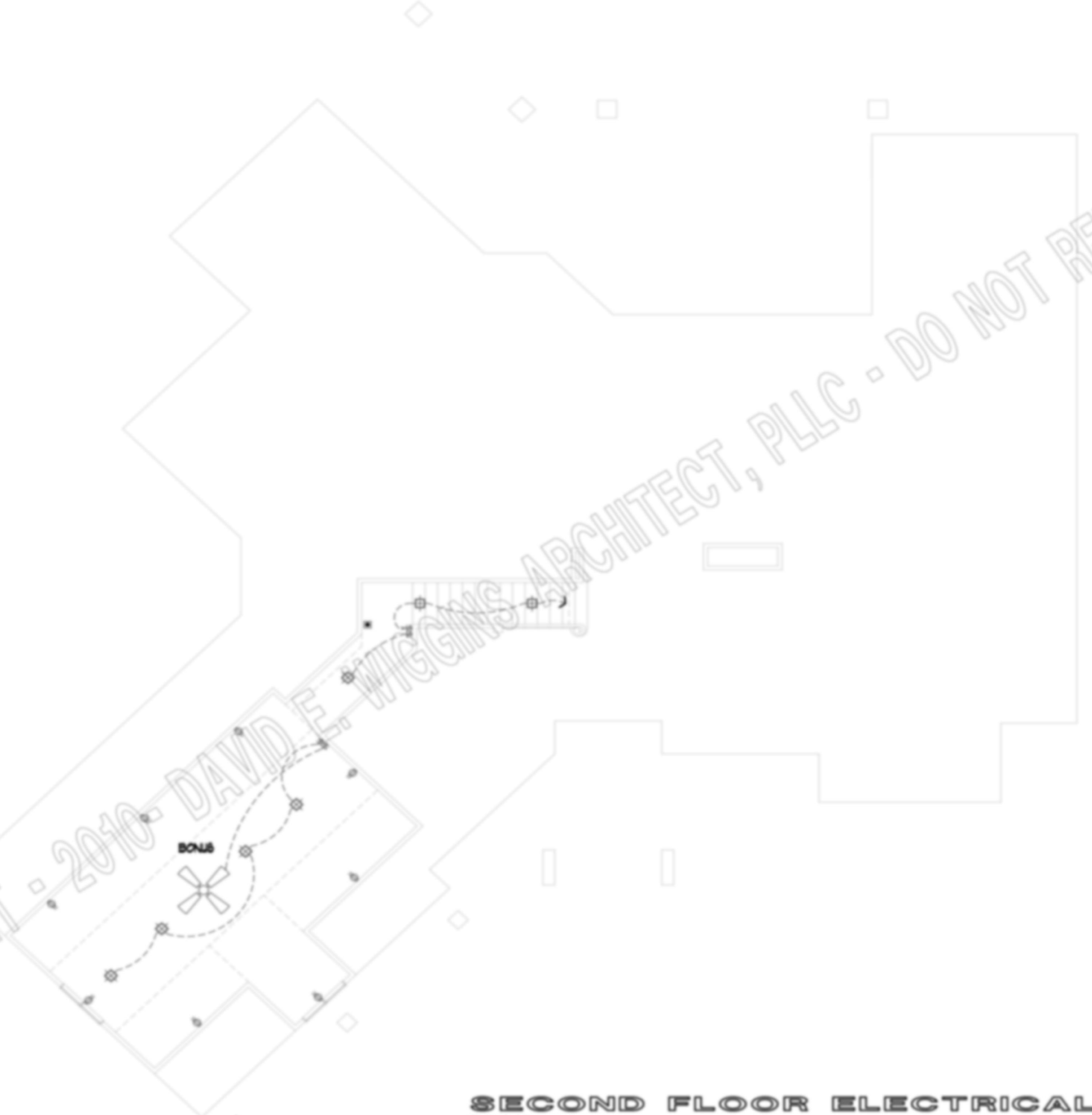


**ARCHITECT**  
 2720 Highland Trail - Leesville, Texas - 75460  
 (936) 263-2700

PLAN 2482



COPYRIGHT © 2010 DAVID E. WIGGINS ARCHITECT, PLLC - DO NOT REPRODUCE



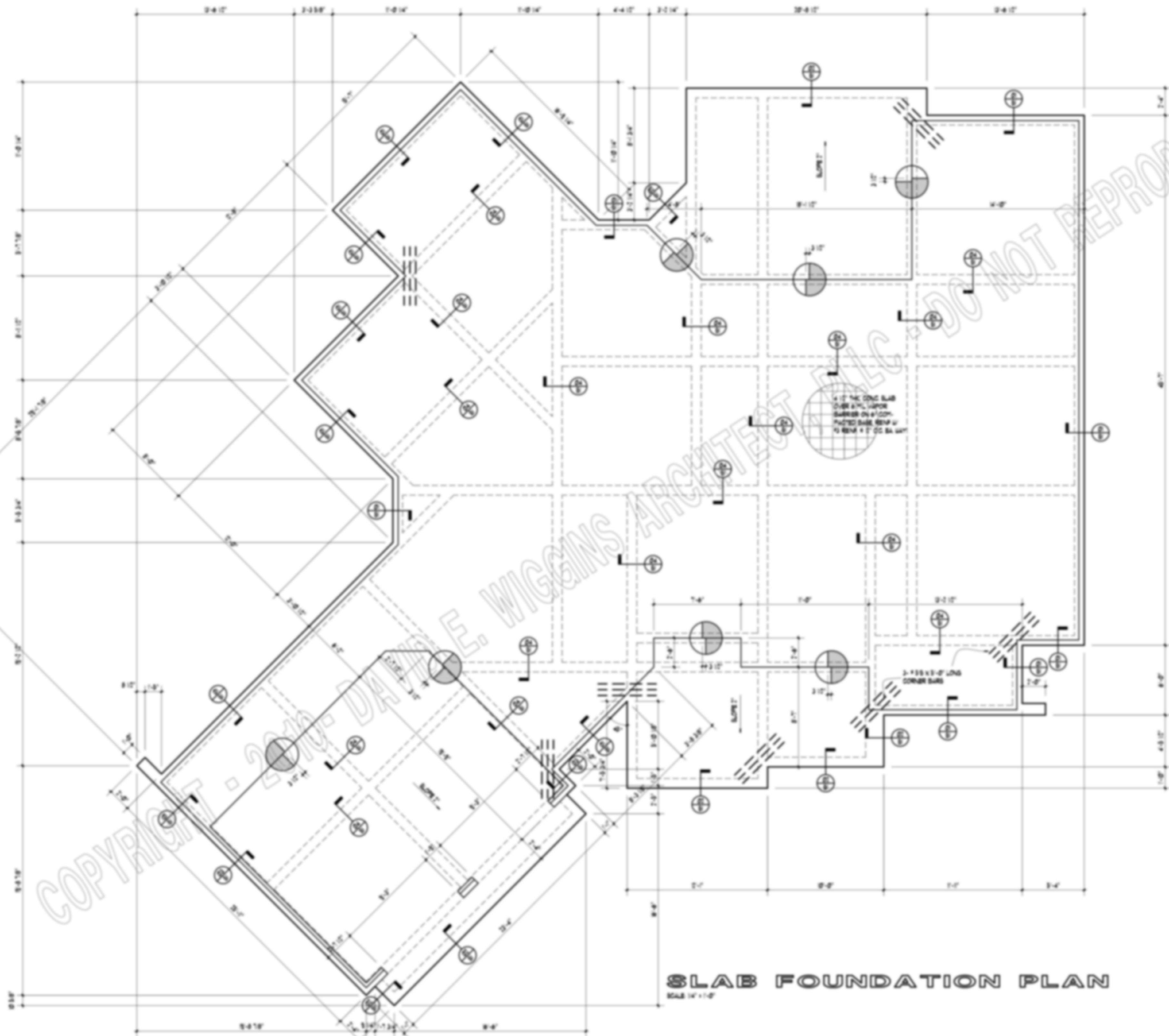
**SECOND FLOOR ELECTRICAL PLAN**  
SCALE 1/4" = 1'-0"

COPYRIGHT 2010 - DAVID E. WIGGINS ARCHITECT, PLLC - DO NOT REPRODUCE

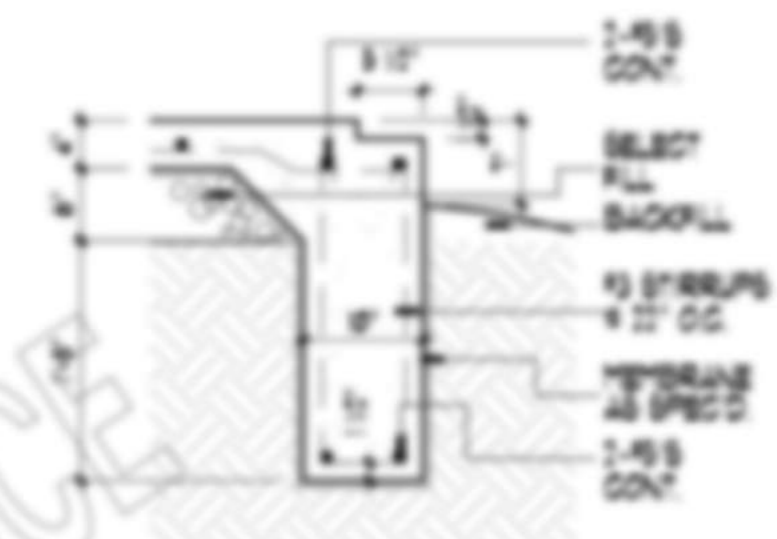
PROJECT
REVISION
DATE
DECEMBER 1, 2010



PLAN 2482



**SLAB FOUNDATION PLAN**  
SCALE 1/4" = 1'-0"



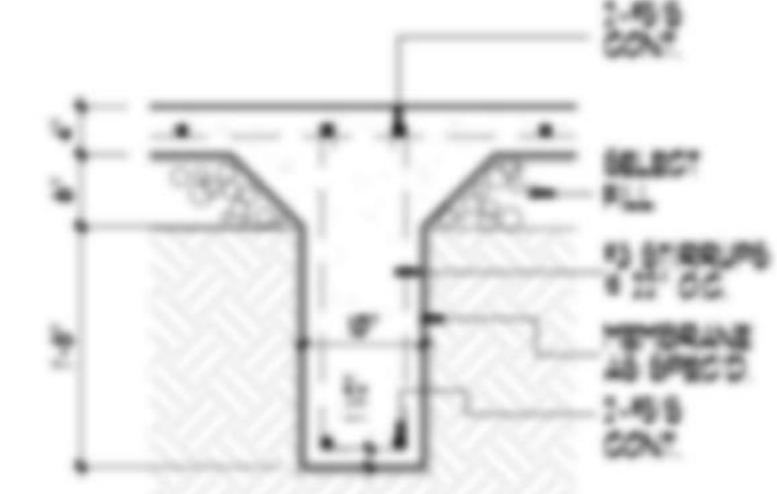
BEAM DETAIL  
1/4" = 1'-0"



BEAM DETAIL  
1/4" = 1'-0"



BEAM DETAIL  
1/4" = 1'-0"



BEAM DETAIL  
1/4" = 1'-0"

**NOTES**

1. ALL BEAMS TO PENETRATE A MIN. OF 4" INTO ADJACENT SLAB.
2. LAPS OR SPLICES TO BE A MIN. OF 3X BAR DIAMETERS.
3. PROVIDE A CORNER BARS IN ALL CORNERS OF ALL BEAMS OR EXTERIOR BEAMS. MINIMAL ONE AT TOP OUTER AND ONE AT BOTTOM OUTER.
4. FOUNDATION DESIGN IS GENERAL AND NOT SPECIFIC FOR PARTICULAR SITE CONDITIONS. THEREFORE, BUILDER SHALL ASSUME RESPONSIBILITY FOR APPLICABILITY OF THE FOUNDATION DESIGN.
5. CONTRACTOR SHALL VERIFY AND COORDINATE LOCATIONS OF ALL FIELD EQUIPMENT ELECTRICAL RECEPTACLES AND CONDUIT PIPING LOCATIONS AND THRESHOLD BLOCKOUTS.

COPYRIGHT 2010 - DAVID E. WIGGINS ARCHITECT, PLLC - DO NOT REPRODUCE

PROJECT

REVISION

DATE

SECTION 1.01



**ARCHITECT**  
2010 Wiggins Road - Louisville, Tennessee - 38003  
501.254.2825



PLAN 2482